

# Professional Certification in The Fundamentals of Neurodiversity

*for Multidisciplinary Professionals*



**SIGN UP TODAY**

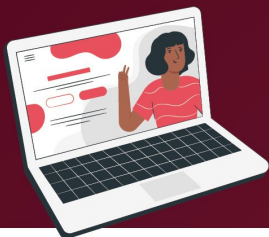
## Scholarships Available!

The FSU Center for Prevention & Early Intervention Policy is now offering a limited number of scholarships in Fall 2024 to professionals serving families and children.

This course provides a comprehensive foundation of knowledge of neurodiversity and practical approaches to supporting neurodivergent individuals -- people with diverse needs, especially those with autism spectrum disorders and other developmental conditions such as ADHD and learning disabilities. It builds participants' knowledge and skills to be able to understand the needs of neurodivergent people and adapt crucial processes and systems for them to thrive.

This course is perfect for Early Steps providers, medical foster parents, staff of local FL public health units, and FL health care providers, among others.

| 5 Modules | 10 hours of content | Videos | Interactive Exercises | Multimedia Materials |



# 20%

*IF YOU INTERACT WITH THE PUBLIC, THIS TRAINING IS FOR YOU.*

It is estimated that up to 20% of the population is neurodivergent, with a variety of unique conditions. Neurodivergent people interact with every system in society including: health care, education, law enforcement, social services, and the legal system.

## Benefits of this certification include:

- Developing a powerful new perspective on neurodivergence.
- Gaining a transformative understanding of the needs, barriers, and strengths of neurodivergent individuals.
- Discovering new ways to help support and build resilience in neurodivergent individuals.
- Acquiring increased awareness of accommodation, communication, and sensory needs.
- Promoting a multidisciplinary approach to neuro-inclusion.
- Growing confidence in your ability to enhance your agency/teams' effectiveness.
- Enhancing professional knowledge, skills, and career potential.

**Click here to complete the scholarship application.**

Deadline for applications is September 20<sup>th</sup>. Priority will be given to medical foster care parents and staff; public health staff; and early intervention staff. Notification of acceptance will be sent September 23<sup>rd</sup>.

For questions about this scholarship opportunity contact Sarah Mullane ([smullane@fsu.edu](mailto:smullane@fsu.edu))